

# EQUIPMENT ESSENTIALS

Help increase efficiencies in your kitchen with our recommended equipment essentials. Regardless of budget, there are items on this list to help you save time and labor.



## FLOOR MIXER

**Vollrath  
(3174151)**

Planetary Mixer, floor model, 30 qt. (28.3 liter) capacity, 3-speed belt drive, 30-minute automatic timer. Stainless steel mixing bowl, dough hook, wire whisk, flat beater and safety guard included. Strong legs maintain stability while black feet prevent movement during use. Safety cut-off interrupts power if gears are changed while the mixer is in use. International models have CE certification only, cast iron body, 1 HP, 111-120v, 16.0 amps, cord, NEMA 5-20P, NSF.



## VEGETABLE PEELER

**TableCraft Products  
(3143371)  
Packed: 1 ea**

Cash & Carry FirmGrip® "Y" Peeler, 5-3/4" x 2-3/4" x 1-1/4", straight edge, dishwasher safe, ergonomic, soft grip handle, black (individually carded).



## BUTTER SPREADER

**Prince Castle  
(1879481)**

Butter Roller, stainless steel.



## POCKET THERMOMETER

**Component Design NW  
(3315131)  
Packed: 1 ea**

Pocket Thermometer, digital, 1.5 mm thin tip. Designed to provide accurate measurements in a wide temperature range from -40 to +450°F/-40 to +230°C, this NSF-certified thermometer is manufactured with biocide, an antimicrobial agent.



## MOBILE PAN RACK

**Cambro  
(4530351)**

Nesting Sheet Pan Rack, 22"L x 27-1/2"W x 70"H, (20) full-size 18" x 26" sheet pans capacity, 650 lb. capacity, 3" spacing, front loading, open sides, (4) casters (2 with brakes), aluminum, KD, NSF (QTY Break = 1 each).



## COMBI OVEN, GAS

**Rational (4788931)**

(CC1GRRA.0000238 - NG - 208/240V) iCombi Pro® 6-Full Size Combi Oven, natural gas, (6) 18" x 26" Sheet pan or (12) 12" x 20" steam pan or (6) 2/1 GN pan capacity, (3) stainless steel grids included, intelligent cooking system with (4) assistants: iDensityControl, iCookingSuite, iProductionManager, and iCareSystem, (6) operating modes, (5) cooking methods, (3) manual operating modes, 85° to 572°F temperature range, quick clean, care control, and eco modes, 6-point core temperature probe, retractable hand shower, Ethernet interface, Wi-Fi enabled, includes (1) bucket Active Green Cleaner & (1) bucket of Care Tabs, 106,500 BTU, 208/240v/60/1-ph, 6 ft. cord, 0.9 kW, CE, IPX5, cCSAus, NSF, ENERGY STAR®.



**FOOD PROCESSOR,  
BENCHTOP /  
COUNTERTOP  
Robot Coupe  
(2068381)**

Cutter/Mixer, 3-quart clear plastic bowl with handle, "S" blade with smooth edges, continuous feed, 2 plates, on/off & pulse switch, 1725 RPM, 1 HP, 120V, 21"W x 11.5"L x 18"H.



**FRUIT / VEGETABLE  
DICER Vollrath  
(1888121)**

InstaCut® 5.0 Manual Food Processor, includes: T-Handle, pusher block and blade, 1/4" (6.4 mm) dice, overall dimensions 9.65" W x 11.26" D x 18.5" H, (2) year warranty on base unit (does not cover blades), NSF.



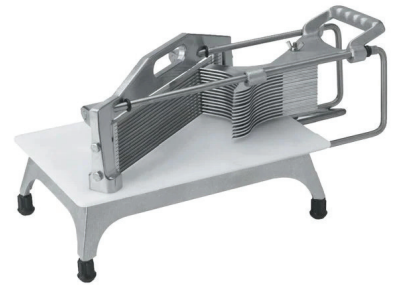
**MANDOLINE  
Matfer Inc.  
(1861451)**

Manual vegetable prep, smooth inclined plane, changeable blades, slice, julienne, stainless steel with protector.



**TOMATO SLICER  
Vollrath  
(1879831)**

RedCo® Tomato Pro Tomato Slicer, 1/4" cut size, straight blades, positive-stop arm and solid base legs, fits tomato up to 3 1/2 inches, 9-1/2"L x 18-3/4"W x 9-1/2"H, high density polyethylene material resists corrosion, NSF.



**GAS FLOOR FRYER  
Therma-Tek  
(4786471)**

Therma-Tek TEK40-N fryer, free-standing, natural gas, 40 lb. oil capacity, stainless steel fry pot, 200° to 400°F temperature range, Invesys® thermostat, auto reset high limit, 1-1/4" ball type drain, flue deflector, pressure regulator, includes: (2) nickel chrome wire mesh baskets, stainless steel front & sides, 6" adjustable legs, 90,000 BTU, cULus, UL classified.



**INDUCTION RANGE  
Vollrath (3145681)**

Mirage® Pro Induction Range, countertop, 14"W x 15-1/4"D x 3"H, ceramic top, 10-1/4" maximum pan size, G4 Engine, (4) IGBT switches, (100) power levels, (1-180) minute timer, knob control, digital readout & troubleshooting display, overheat protection, small-article detection, pan auto-detection function, empty-pan shut off, stainless steel case, rubber feet, NSF, UL, FCC, imported.



**PARING KNIFE  
Winco  
(4085831)  
Packed: 2 ea**

Winco Stäl Paring Knife, 3-1/4" blade, white polypropylene handle, high carbon stainless steel, smooth edge, slip-resistant, stain-free, NSF.



**BREAD KNIFE  
Victorinox  
(4675181)  
Packed: 1 ea**

Bread Knife, 10-1/4" blade, serrated edge, high carbon stainless steel, black Fibrox® Pro handle, slip resistant, dishwasher safe, NSF.



**CHEF KNIFE**  
**Victorinox**  
**(4674361)**  
**Packed: 1 ea**



Chef's Knife, 10" blade, 2-1/4" handle, high-carbon stainless steel blade, rosewood handle.

**CONVEYOR TOASTER**  
**Winco**  
**(4699861)**



ECT-700 Conveyor Toaster, countertop design, horizontal conveyor, 700 slices per hour, 2-1/2" high feeder opening, stainless steel exterior, variable conveyor-speed dial control, energy saver mode, removable crumb tray, adjustable legs, non-skid feet, 16.38" x 14.63" x 16.96" dimensions, UL listed.

**UTILITY CART**  
**Rubbermaid**  
**(2860181)**



4091BK Utility Cart, (3) shelves, 300 pound total capacity, (4) nonmarking 4" casters, 40-5/8"L x 20"W x 37-13/16"H, plastic, black.

**IMMERSION BLENDER**  
**Waring**  
**(3745561)**



2-speed high-efficiency motor, 7" fixed shaft, 3-gallon capacity, lightweight and compact, all-purpose stainless steel blade, NSF.

**KITCHEN SHEARS**  
**Mundial**  
**(3563111)**  
**Packed: 1 ea**



High-carbon stainless steel, black, thermoplastic resin handle, 10.5" x 4" x 4.5" dimensions, NSF.

**SQUEEZE BOTTLE**  
**Tablecraft**  
**(4190801)**  
**Packed: 6 ea**



Wide Mouth squeeze bottle, 32 oz., standard cone tip, 63 mm opening, polyethylene, dishwasher safe, clear, NSF.

**MIXING BOWL, METAL**  
**Vollrath**  
**(3154211)**



Mixing Bowl, 80 quart, stainless, 12.05" H x 30.75" W x 31.5" D.

**BUN CABINET**  
**Cambro (4870821)**



Pro Cart Hot Food Pan Carrier, electric, front loading, single compartment, holds (8) 18" x 26" sheet pans, (16) 13" x 18-1/2" sheet pans, (16) GN 1/1 food pans (2-1/2" deep), (8) 15-3/4" x 23-1/2" trays, and (8) 16" x 16" pizza boxes, keeps food hot up to 4 hours while unplugged, (1) gasket free magnetic quick-close door, 4" nylon latches, menu pocket, 8 adjustable stainless steel rails with 3" - 1-1/2" spacing, solar digital thermometer, perimeter bumper, (4) heavy duty casters, polyethylene exterior, charcoal gray, 110v/50/60/1-ph, 529 watts, 4.6 amps, NEMA 5-15P, cETLus, NSF.